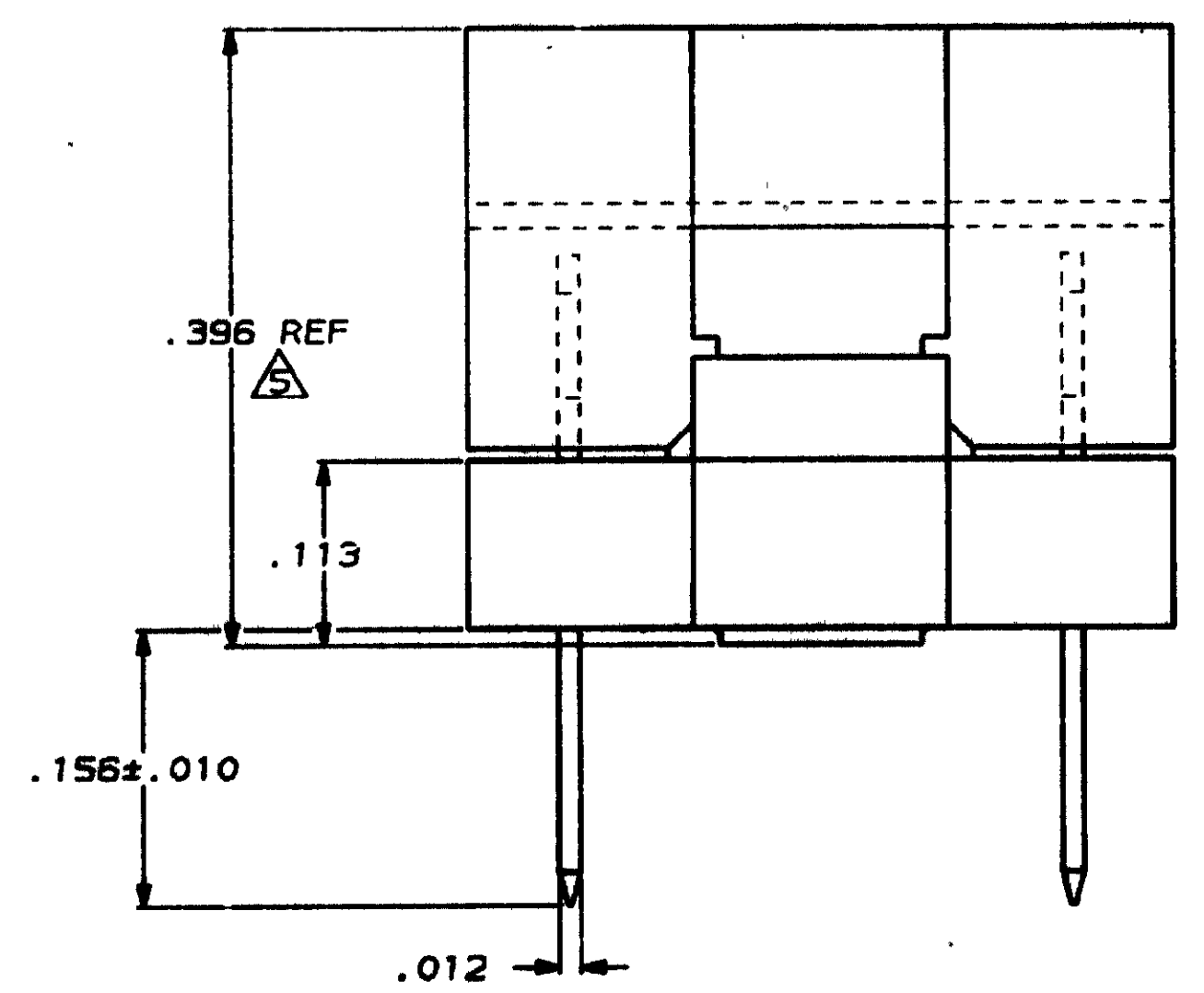
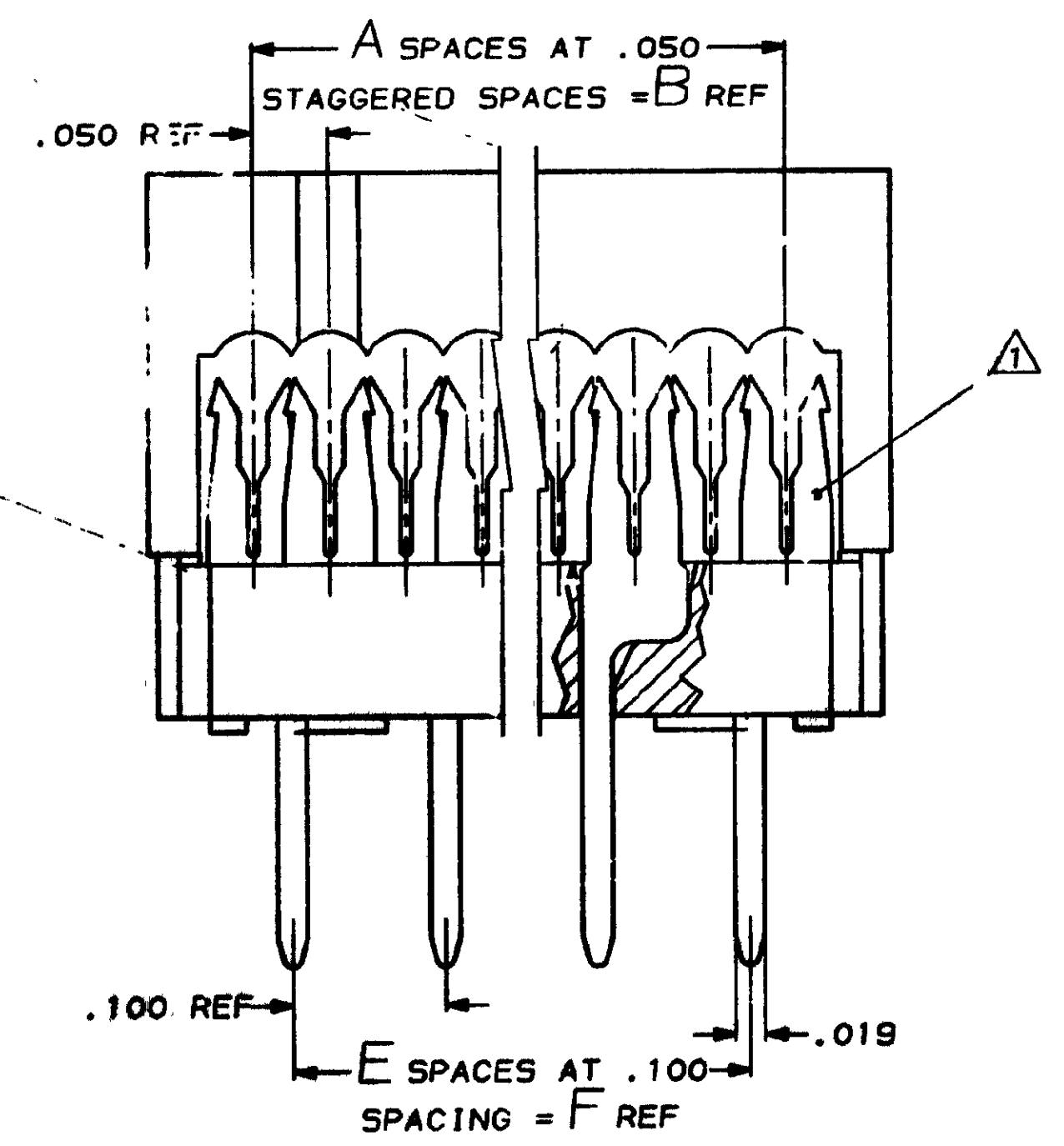
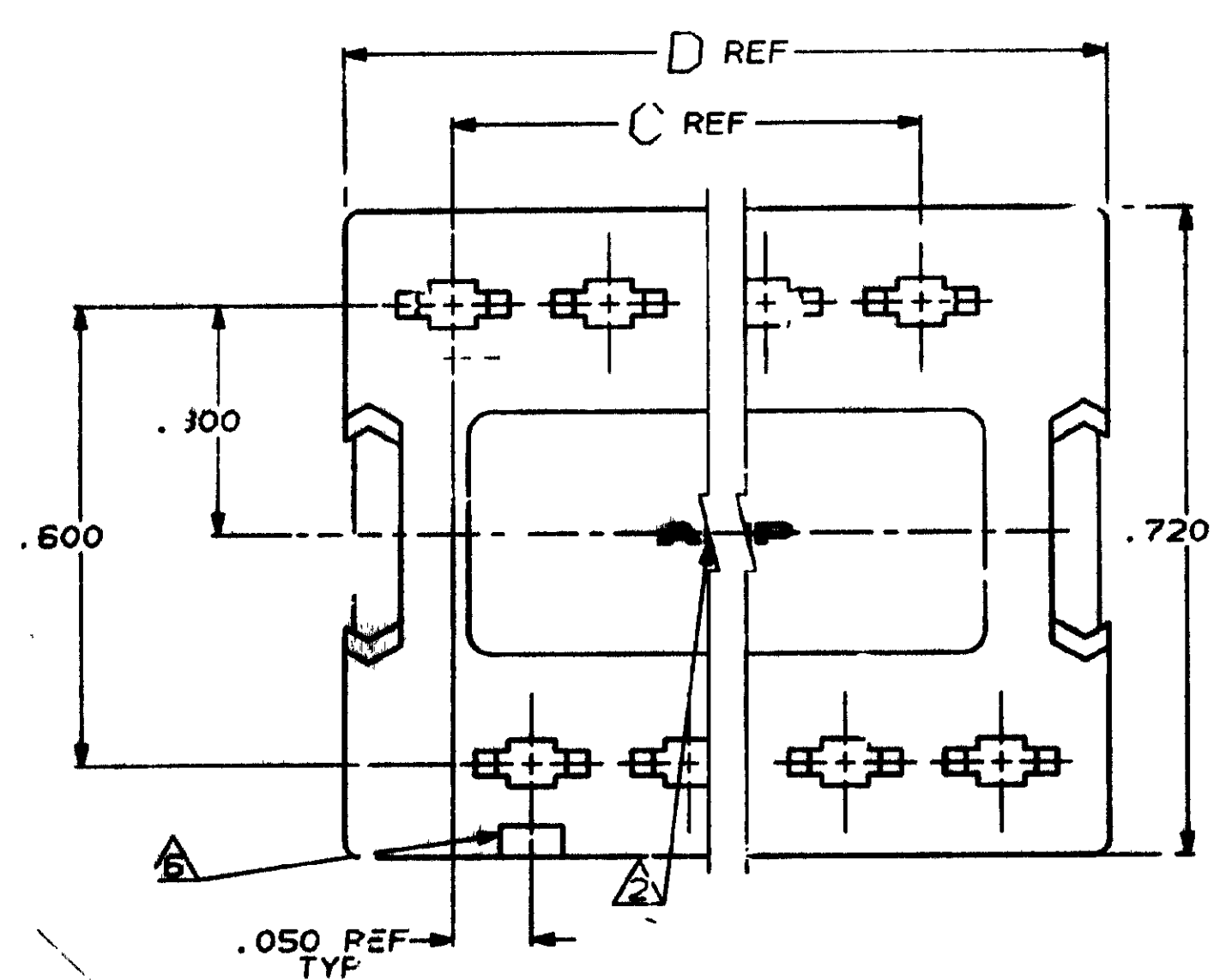
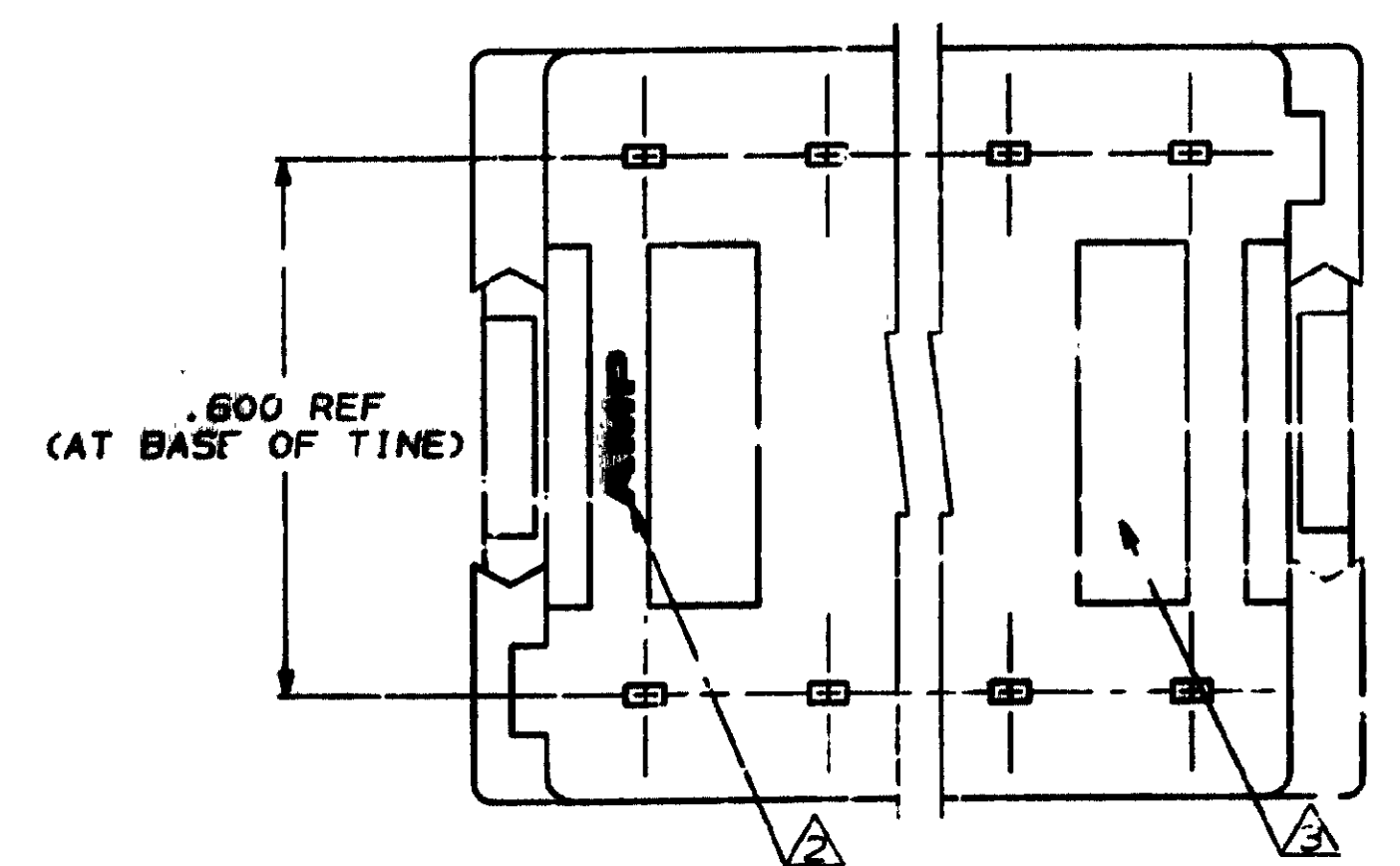
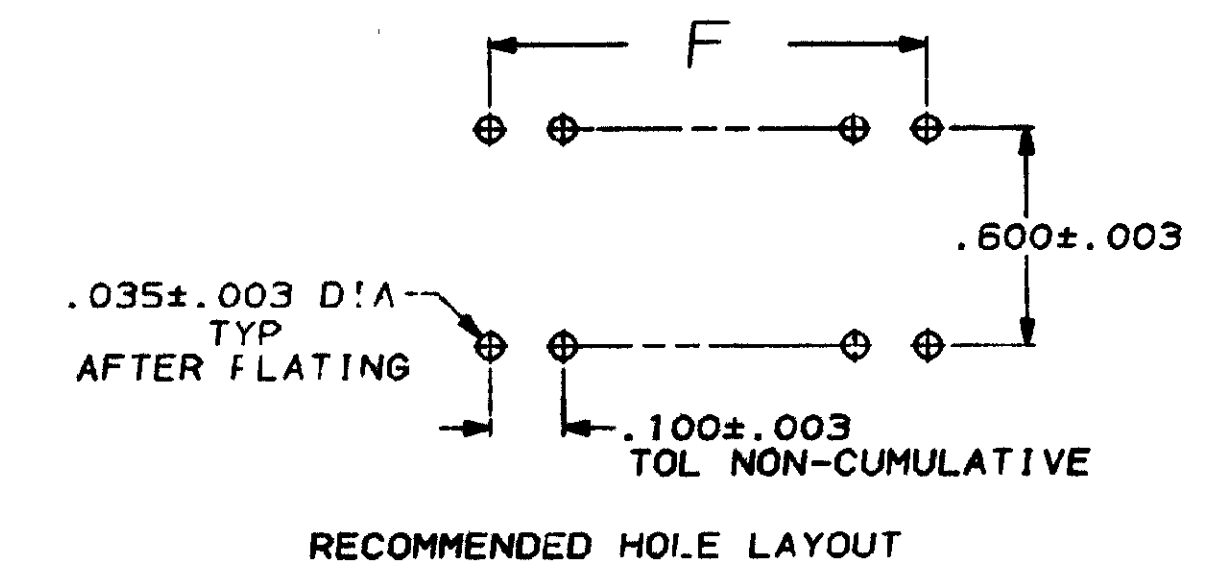


DRAWING MADE IN THIRD ANGLE PROJECTION
 THIS DRAWING IS UNPUBLISHED. RELEASED FOR PUBLICATION
 © COPYRIGHT 19 BY AMP INCORPORATED, HARRISBURG, PA. ALL INTERNATIONAL RIGHTS RESERVED. AMP PRODUCTS MAY BE COVERED BY U.S. AND FOREIGN PATENTS AND/OR PATENTS PENDING.

LOC	DIST	REV	DATE	DESCRIPTION	APPD
AR	39	B		REV PER ECN 1125	-
		C		REV PER ECN 1297	1-30-87 JP SW
		CT		REVISED ECN-CF-1577	8-24-88
		D		REVSD/ECN CF-1706	07/88



- △ CONTACTS DESIGNED FOR 28 AWG STRANDED OR 26, 28, & 30 AWG SOLID WIRE.
- △ AMP TRADEMARK LOCATED IN APPROX AREA SHOWN.
- △ STANDOFFS, POSITION 24 (4) STANDOFFS, (2) EQUALLY SPACED BETWEEN (2) SHOWN
 POSITION 28 (5) STANDOFFS, (3) EQUALLY SPACED BETWEEN (2) SHOWN.
 POSITION 40 (6) STANDOFFS, (4) EQUALLY SPACED BETWEEN (2) SHOWN.
- △ PLATED WITH .000100 - .000200 BRIGHT TIN LEAD OVER .000050 NICKEL.
- △ HEIGHT AFTER TERMINATION IS .253 REF.
- △ INDICATES NO 1 POSITION.



1.900	19	2.088	1.900	1.950	39	40	746616-3
1.300	13	1.488	1.300	1.350	27	28	746616-2
1.100	11	1.288	1.100	1.150	23	24	746616-1
							PART NO

UNLESS OTHERWISE SPECIFIED DIMENSIONS ARE IN INCHES TOLERANCES ON :		DR J. PEACHEY 6-17-86	AMP INCORPORATED Harrisburg, Pa. 17105	
2 PL DEC ± .005	3 PL DEC ± .005	CT M.E. ZELKO 6-16-86	NAME KIT, AMP-LATCH™ DIP PLUG, PREASSEMBLED 100 X .600 CENTERS, FULL TIN PLATED CONTACTS	
ANGLES ± .5		APPD M. GULLY 6-18-86		
MATERIAL MOLDED PARTS: 64v-0 RATED THERMOPLASTIC, COLOR: BLACK CONTACTS: PHOS BRONZE		APPD D. HOFFMAN 6-20-86	PRODUCT SPEC 108-40012	
FINISH CONTACTS: △		APPLICATION SPEC 114-40005	SIZE D	FSCN NO 00779
		WEIGHT	DRAWING NO 746616	
		SCALE NTS	SHEET - OF -	